

FITC-Labeled Human HLA-A*11:01&B2M&KRAS WT (VVGAGGVGK) Monomer Protein



Cat. No. MHC-HM429F

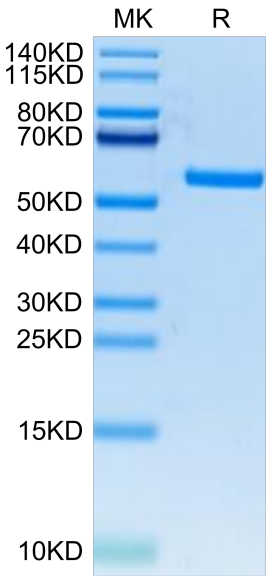
Description	
Source	Recombinant FITC-Labeled Human HLA-A*11:01&B2M&KRAS WT (VVGAGGVGK) Monomer Protein is expressed from HEK293 with His tag and Avi tag at the C-Terminus. It contains Gly25-Thr305 (HLA-A*11:01), Ile21-Met119 (B2M) and VVGAGGVGK peptide.
Accession	AAV53343.1(HLA-A*11:01)&P61769(B2M)&VVGAGGVGK
Molecular Weight	The protein has a predicted MW of 50.30 kDa. Due to glycosylation, the protein migrates to 55-60 kDa based on Bis-Tris PAGE result.
Wavelength	Excitation Wavelength: 490 nm Emission Wavelength: 520 nm
Endotoxin	Less than 1 EU per µg by the LAL method.
Purity	> 95% as determined by Bis-Tris PAGE > 95% as determined by HPLC

Formulation and Storage	
Formulation	Supplied as 0.22µm filtered solution in PBS (pH 7.4).
Storage	Valid for 6 months from date of receipt when stored at -80°C. Recommend to aliquot the protein into smaller quantities for optimal storage. Please minimize freeze-thaw cycles.

Background	
Kirsten rat sarcoma 2 viral oncogene homolog (KRAS) is the most commonly mutated oncogene in human cancer. The developments of many cancers depend on sustained expression and signaling of KRAS, which makes KRAS a high-priority therapeutic target.	

Assay Data

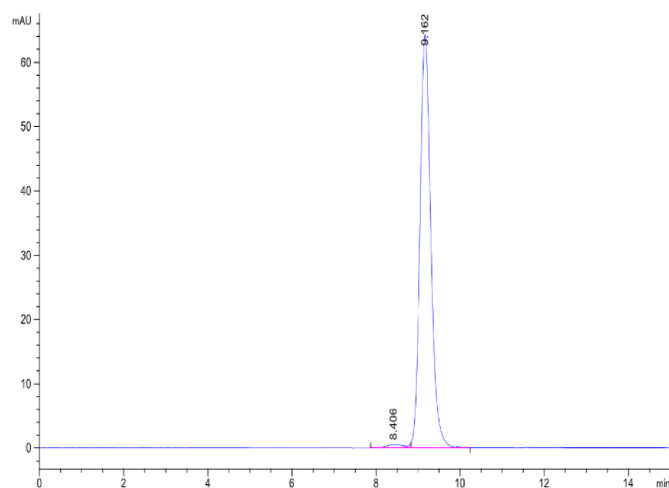
Bis-Tris PAGE



FITC-Labeled Human HLA-A*11:01&B2M&KRAS WT (VVGAGGVGK) Monomer on Bis-Tris PAGE under reduced condition. The purity is greater than 95%.

SEC-HPLC

Assay Data



The purity of FITC-Labeled Human HLA-A*11:01&B2M&KRAS WT (VVVGAGGVGK) Monomer is greater than 95% as determined by SEC-HPLC.